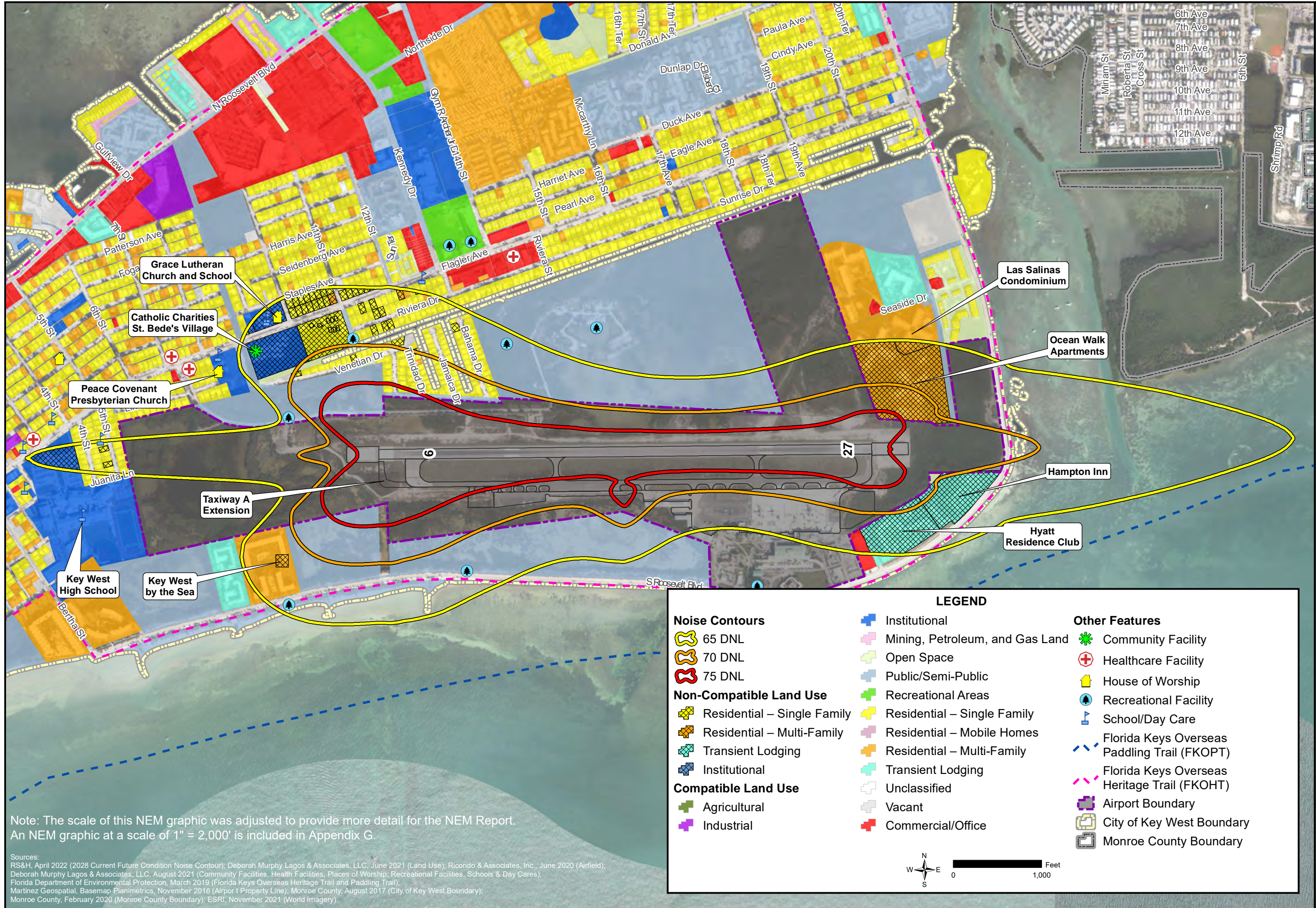


Path: C:\Users\stale\_e\dropbox\Deborah Murphy Lagos & Associates, LLC\Projects\Key West - NEM Update\maps\Figures\Figure 5-1 2028 Future Condition NEM.mxd, Date Saved: 8/20/2022 11:43:41 PM



Note: The scale of this NEM graphic was adjusted to provide more detail for the NEM Report. An NEM graphic at a scale of 1" = 2,000' is included in Appendix G.

Sources: RS&H, April 2022 (2028 Current Future Condition Noise Contour); Deborah Murphy Lagos & Associates, LLC, June 2021 (Land Use); Ricondo & Associates, Inc., June 2020 (Airfield); Deborah Murphy Lagos & Associates, LLC, August 2021 (Community Facilities, Health Facilities, Places of Worship, Recreational Facilities, Schools & Day Cares); Florida Department of Environmental Protection, March 2019 (Florida Keys Overseas Heritage Trail and Paddling Trail); Martinez Geospatial, Basemap Planimetrics, November 2016 (Airport Property Line); Monroe County, August 2017 (City of Key West Boundary); Monroe County, February 2020 (Monroe County Boundary); ESRI, November 2021 (World Imagery)

**LEGEND**

<b>Noise Contours</b>	Institutional	<b>Other Features</b>
65 DNL	Mining, Petroleum, and Gas Land	Community Facility
70 DNL	Open Space	Healthcare Facility
75 DNL	Public/Semi-Public	House of Worship
<b>Non-Compatible Land Use</b>	Recreational Areas	Recreational Facility
Residential – Single Family	Residential – Single Family	School/Day Care
Residential – Multi-Family	Residential – Mobile Homes	Florida Keys Overseas Paddling Trail (FKOPT)
Transient Lodging	Residential – Multi-Family	Florida Keys Overseas Heritage Trail (FKOHT)
Institutional	Transient Lodging	Airport Boundary
<b>Compatible Land Use</b>	Unclassified	City of Key West Boundary
Agricultural	Vacant	Monroe County Boundary
Industrial	Commercial/Office	

