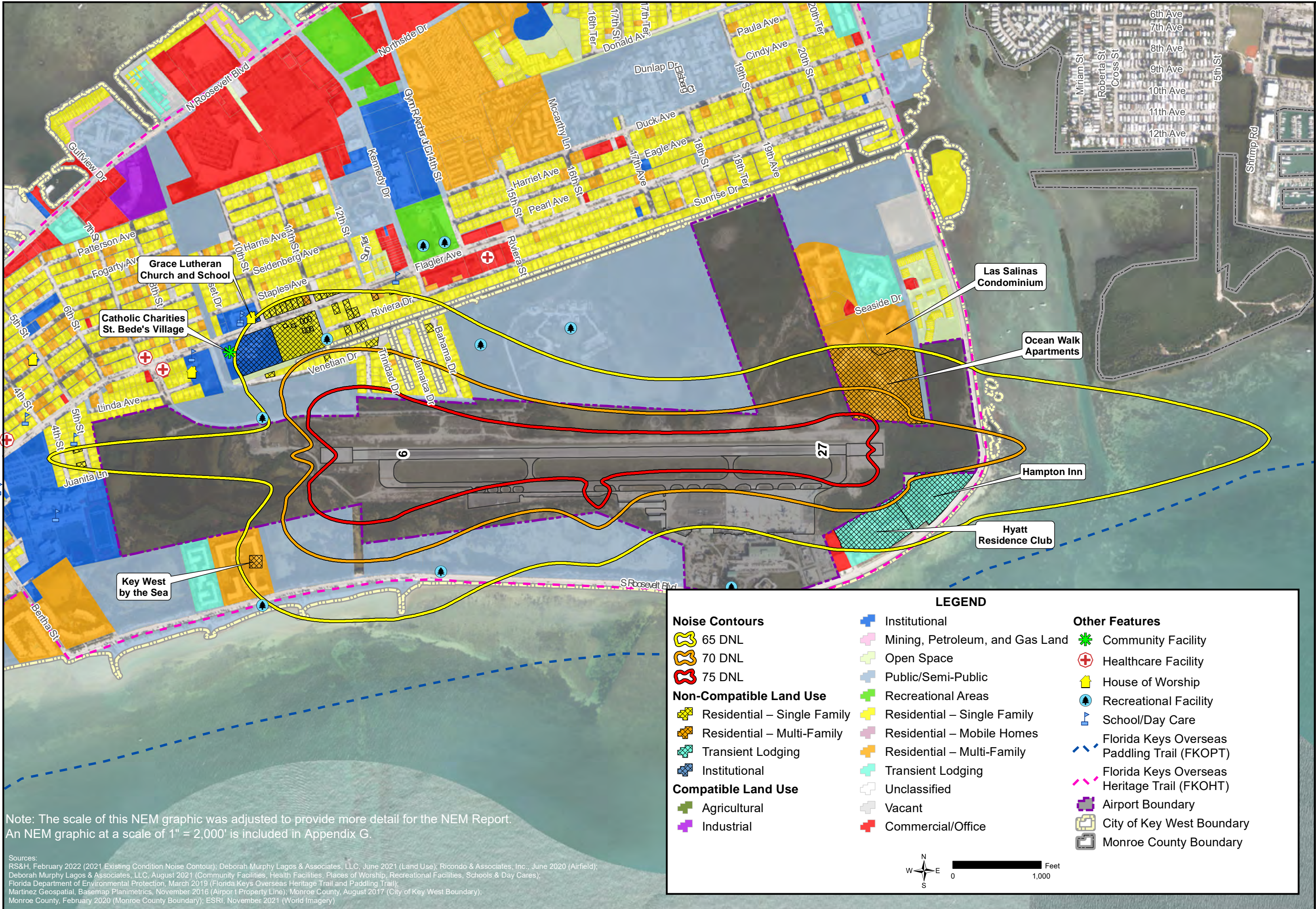


Path: C:\Users\stale_e\dropbox\Deborah Murphy Lagos & Associates, LLC\Projects\Key West - NEM Update\maps\Figures\Figures 4-11 Existing Conditions\Figures 4-11 Existing Conditions\NEM.mxd, Date Saved: 8/20/2022 11:48:50 PM



Note: The scale of this NEM graphic was adjusted to provide more detail for the NEM Report. An NEM graphic at a scale of 1" = 2,000' is included in Appendix G.

Sources:
 RS&H, February 2022 (2021 Existing Condition Noise Contour); Deborah Murphy Lagos & Associates, LLC, June 2021 (Land Use); Ricondo & Associates, Inc., June 2020 (Airfield);
 Deborah Murphy Lagos & Associates, LLC, August 2021 (Community Facilities, Health Facilities, Places of Worship, Recreational Facilities, Schools & Day Cares);
 Florida Department of Environmental Protection, March 2019 (Florida Keys Overseas Heritage Trail and Paddling Trail);
 Martinez Geospatial, Basemap Planimetrics, November 2016 (Airport Property Line); Monroe County, August 2017 (City of Key West Boundary);
 Monroe County, February 2020 (Monroe County Boundary); ESRI, November 2021 (World Imagery)

LEGEND		
Noise Contours		
65 DNL	Institutional	Community Facility
70 DNL	Mining, Petroleum, and Gas Land	Healthcare Facility
75 DNL	Open Space	House of Worship
Non-Compatible Land Use	Public/Semi-Public	Recreational Facility
Residential – Single Family	Recreational Areas	School/Day Care
Residential – Multi-Family	Residential – Single Family	Florida Keys Overseas Paddling Trail (FKOPT)
Transient Lodging	Residential – Mobile Homes	Florida Keys Overseas Heritage Trail (FKOHT)
Institutional	Residential – Multi-Family	Airport Boundary
Compatible Land Use	Unclassified	City of Key West Boundary
Agricultural	Vacant	Monroe County Boundary
Industrial	Commercial/Office	

