

## **APPENDIX G**

### **LARGE SCALE FLIGHT TRACK MAPS AND NOISE EXPOSURE MAPS**

#### **G.1 INTRODUCTION**

Title 14 CFR part 150, Airport Noise Compatibility Planning, Amendment No. 150-4, Section A150.103(b)(1), requires “A map of the airport and its environs at an adequately detailed scale (not less than 1 inch to 2,000 feet) indicating runway length, alignments, landing thresholds, takeoff start-of-roll points, airport boundary, and flight tracks out to at least 30,000 feet from the end of each runway.” Pursuant to this requirement, the following maps are provided in this appendix:

- Figure G.1 – East Flow Flight Tracks
- Figure G.2 – West Flow Flight Tracks
- Figure G.3 – 2022 Existing Condition Noise Exposure Map
- Figure G.4 – 2028 Future Condition Noise Exposure Map

#### **G.2 REFERENCES**

Airport Noise Compatibility Planning, 14 C.F.R.§150 (1984). <https://www.ecfr.gov/current/title-14/chapter-1/subchapter-1/part-150>



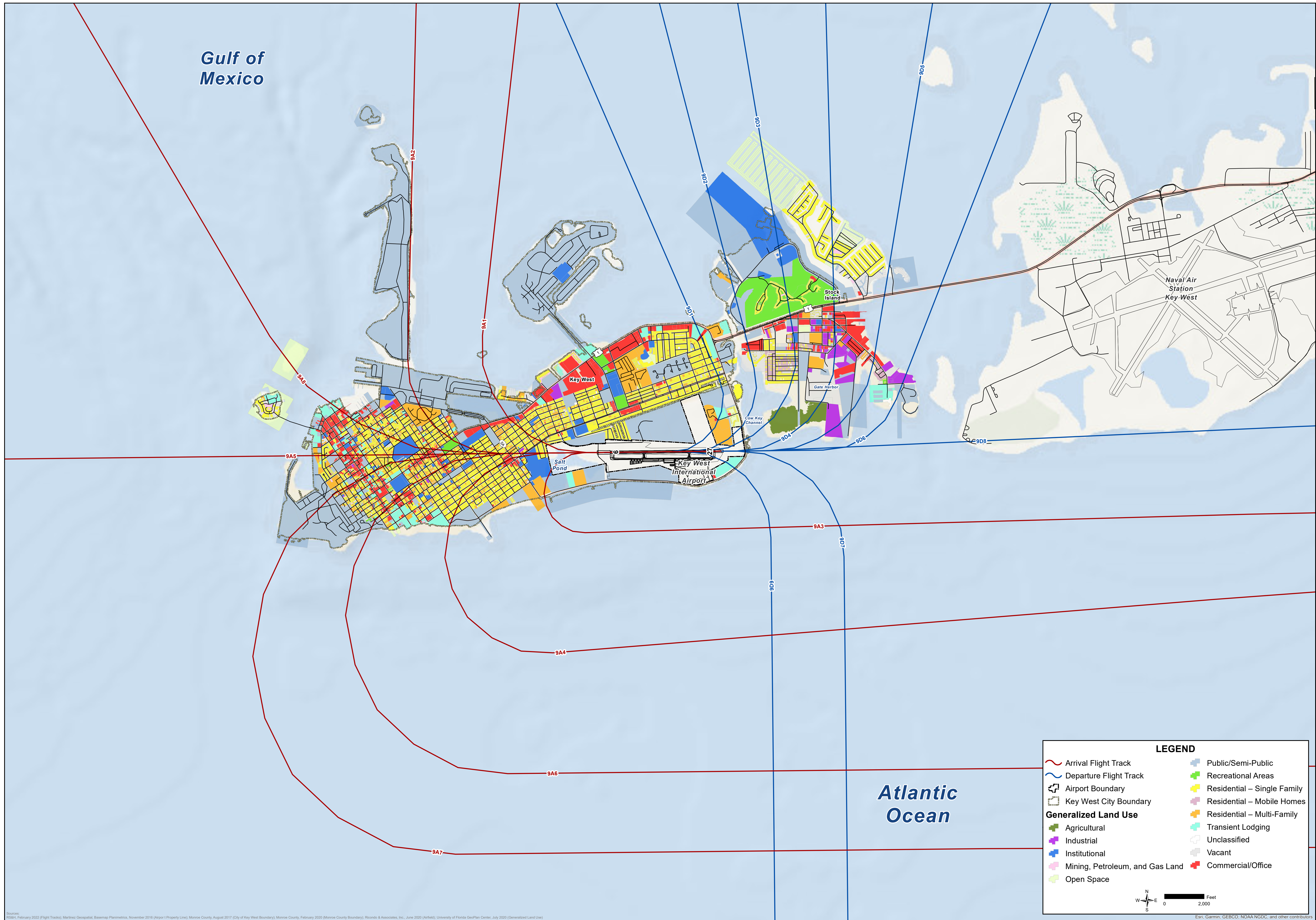
Gulf of Mexico

Atlantic Ocean



East Flow Flight Tracks

FIGURE G.1



**LEGEND**

Arrival Flight Track	Departure Flight Track	Public/Semi-Public
Airport Boundary	Key West City Boundary	Recreational Areas
<b>Generalized Land Use</b>		Residential – Single Family
Agricultural	Industrial	Residential – Mobile Homes
Institutional	Mining, Petroleum, and Gas Land	Residential – Multi-Family
Mining, Petroleum, and Gas Land	Open Space	Transient Lodging
Open Space		Unclassified
		Vacant
		Commercial/Office

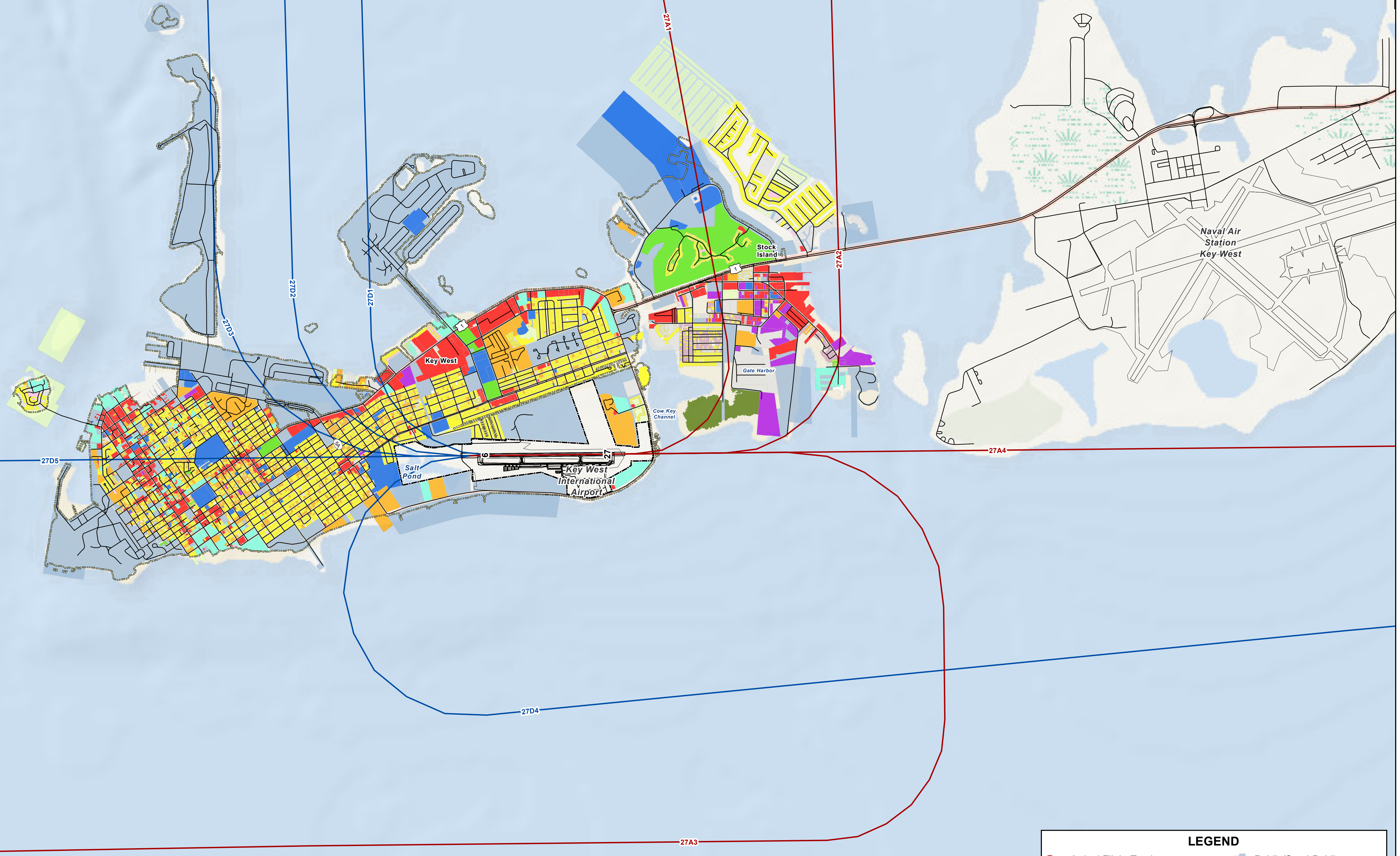
0 2,000 Feet

Esri, Garmin, GEBCO, NOAA NGDC, and other contributors

Source: RSM, February 2022 (Flight Tracks); Martinez Geospatial, BaseMap Platform, November 2016 (Airport Property Line); Monroe County, August 2017 (City of Key West Boundary); Monroe County, February 2020 (Monroe County Boundary); Pionco & Associates, Inc., June 2020 (Aerial); University of Florida GeoPlan Center, July 2020 (Generalized Land Use)



Gulf of Mexico



Atlantic Ocean

**LEGEND**

Arrival Flight Track	Departure Flight Track	Public/Semi-Public
Airport Boundary	Recreational Areas	Residential – Single Family
Key West City Boundary	Residential – Mobile Homes	Residential – Multi-Family
<b>Generalized Land Use</b>	Transient Lodging	Unclassified
Agricultural	Vacant	Commercial/Office
Industrial		
Institutional		
Mining, Petroleum, and Gas Land		
Open Space		

0 2,000 Feet

N  
W E  
S



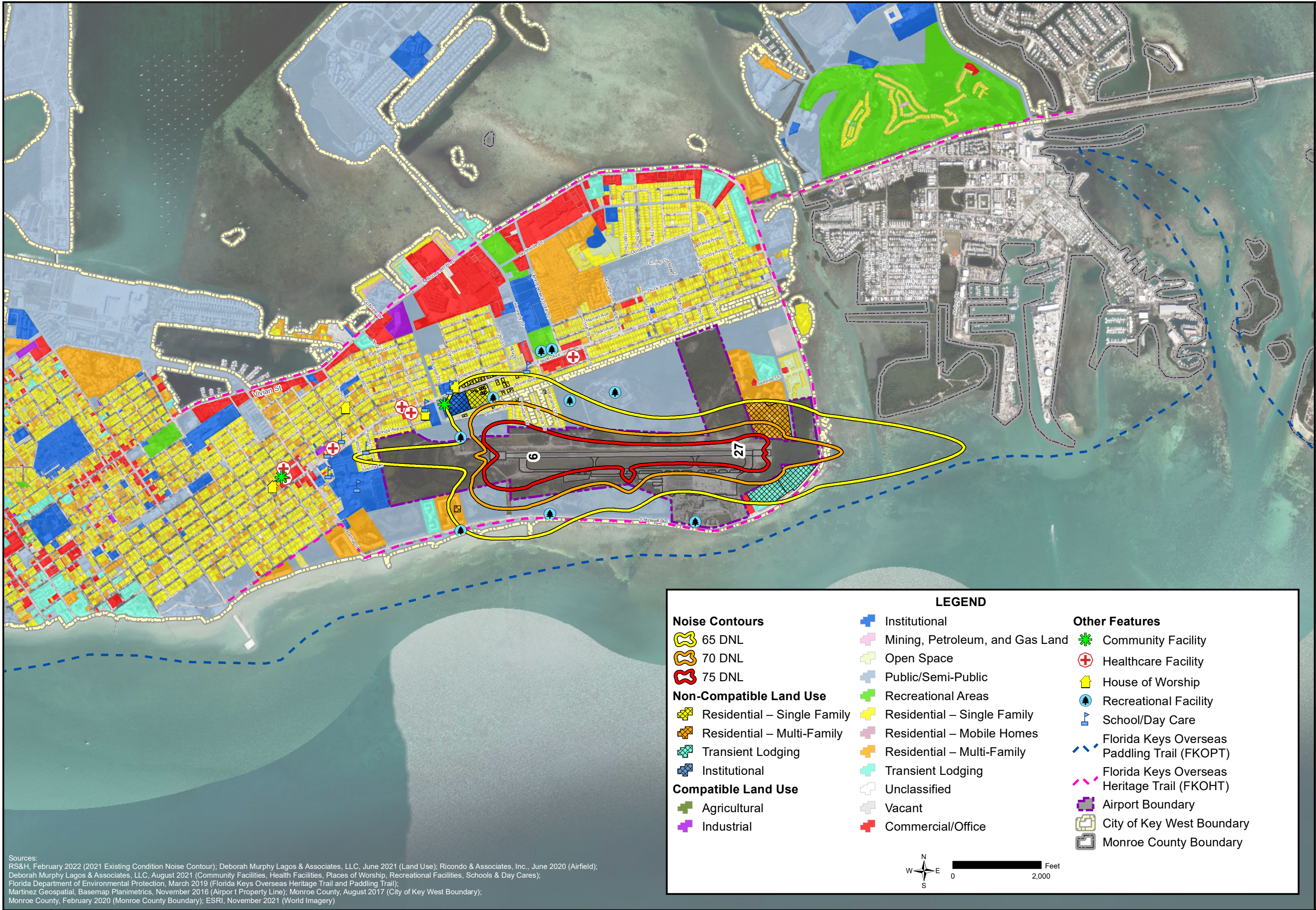
West Flow Flight Tracks

FIGURE G.2

Sources: RSM, February 2002 (Flight Tracks); Martinez Geospatial, BaseMap Planimetrics, November 2016 (Airport Property Line); Monroe County, August 2017 (City of Key West Boundary); Monroe County, February 2020 (Monroe County Boundary); Pionato & Associates, Inc., June 2020 (Aerial); University of Florida GeoPlan Center, July 2020 (Generalized Land Use); Esri, Garmin, GEBCO, NOAA NGDC, and other contributors.



Path: C:\Users\stale\_edgar\000\Dropbox\Deborah Murphy Lagos & Associates, LLC\Projects\Key West - NEM Update\maps\Figures\Figure G-3 2021 Existing Condition NEM - 11x17 - 2000ft.mxd, Date Saved: 2/18/2023 9:05:42 PM



Sources:  
 RS&H, February 2022 (2021 Existing Condition Noise Contour); Deborah Murphy Lagos & Associates, LLC, June 2021 (Land Use); Ricondo & Associates, Inc., June 2020 (Airfield);  
 Deborah Murphy Lagos & Associates, LLC, August 2021 (Community Facilities, Health Facilities, Places of Worship, Recreational Facilities, Schools & Day Cares);  
 Florida Department of Environmental Protection, March 2019 (Florida Keys Overseas Heritage Trail and Paddling Trail);  
 Martinez Geospatial, Basemap Planimetrics, November 2016 (Airport Property Line); Monroe County, August 2017 (City of Key West Boundary);  
 Monroe County, February 2020 (Monroe County Boundary); ESRI, November 2021 (World Imagery)

**2022 EXISTING CONDITION**  
**NOISE EXPOSURE MAP**

FIGURE  
 G.3A

**LEGEND**

<b>Noise Contours</b>	Institutional	<b>Other Features</b>
65 DNL	Mining, Petroleum, and Gas Land	Community Facility
70 DNL	Open Space	Healthcare Facility
75 DNL	Public/Semi-Public	House of Worship
<b>Non-Compatible Land Use</b>	Recreational Areas	Recreational Facility
Residential – Single Family	Residential – Single Family	School/Day Care
Residential – Multi-Family	Residential – Mobile Homes	Florida Keys Overseas Paddling Trail (FKOPT)
Transient Lodging	Residential – Multi-Family	Florida Keys Overseas Heritage Trail (FKOHT)
Institutional	Transient Lodging	Airport Boundary
<b>Compatible Land Use</b>	Unclassified	City of Key West Boundary
Agricultural	Vacant	Monroe County Boundary
Industrial	Commercial/Office	

Feet  
 0 2,000



Gulf of Mexico

Atlantic Ocean



2022 Existing Condition Noise Exposure Map

FIGURE G.3B



**LEGEND**

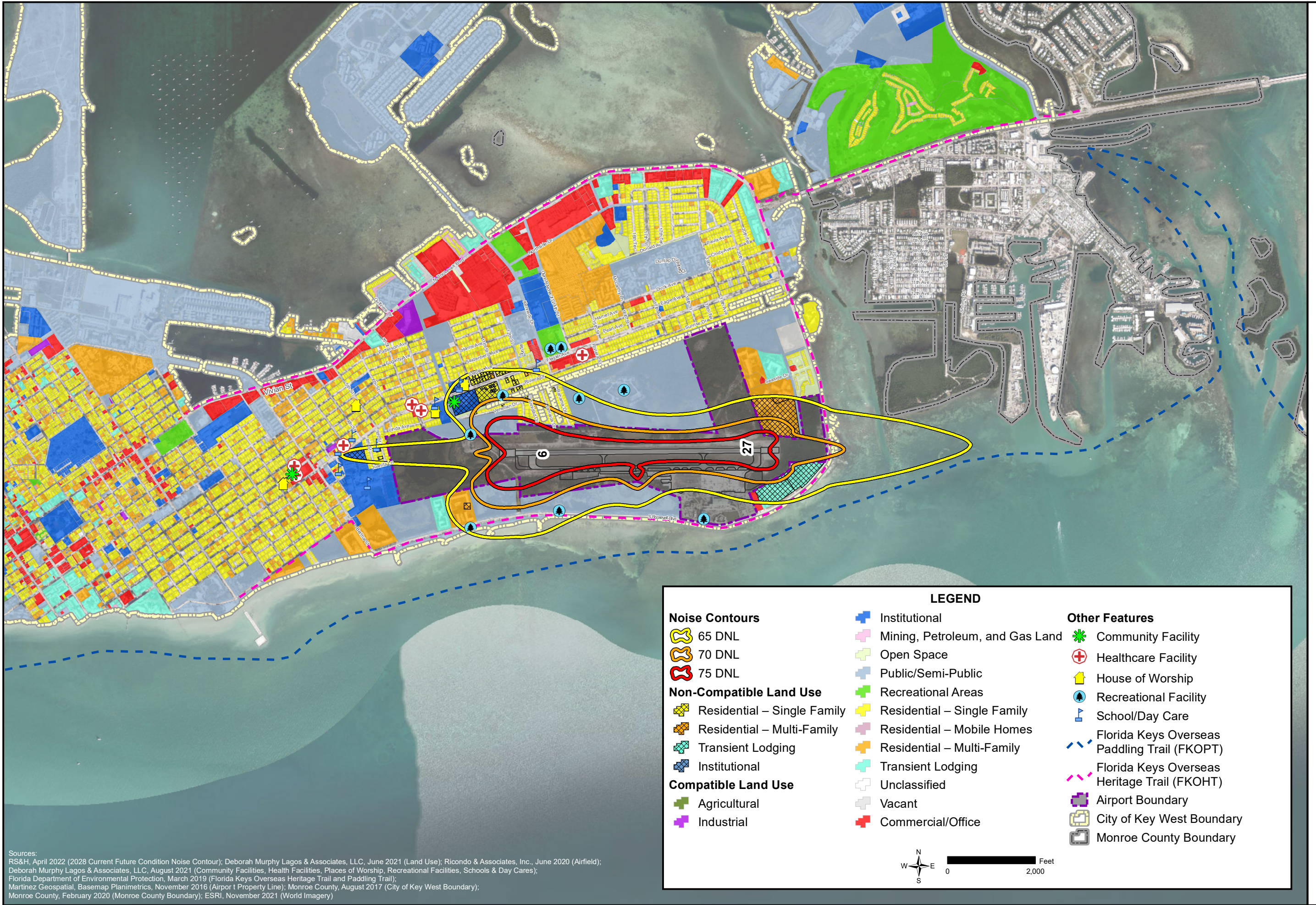
<b>Noise Contours</b>	<b>Non-Compatible Land Use</b>	<b>Compatible Land Use</b>	<b>Institutional</b>	<b>Other Features</b>
65 DNL	Residential – Single Family	Agricultural	Public/Semi-Public	Community Facility
70 DNL	Residential – Multi-Family	Vacant	Recreational Areas	Healthcare Facility
75 DNL	Transient Lodging	Commercial/Office	Open Space	House of Worship
	Institutional		Mining, Petroleum, and Gas Land	Recreational Facility
			Residential – Single Family	School/Day Care
			Residential – Mobile Homes	Florida Keys Overseas Paddling Trail (FKOPT)
			Residential – Multi-Family	Florida Keys Overseas Heritage Trail (FKOHT)
			Residential – Multi-Family	Airport Boundary
			Unclassified	City of Key West Boundary
				Monroe County Boundary

Scale: 0 to 2,000 Feet

Sources: RISH, April 2022 (2025 Current Future Condition Noise Contour); Deborah Murphy Legos & Associates, LLC, June 2021 (Land Use); Ricordo & Associates, Inc., June 2020 (Airfield); Deborah Murphy Legos & Associates, LLC, August 2021 (Community Facilities, Health Facilities, Places of Worship, Recreational Facilities, Schools & Day Care); Florida Department of Environmental Protection, March 2019 (Florida Keys Overseas Heritage Trail and Paddling Trail); Metrick Geospatial, Systems Performance, November 2019 (Airport Property Line); Monroe County August 2017 (City of Key West Boundary); Monroe County, February 2020 (Monroe County Boundary); ESRI, November 2021 (World Imagery).



Path: C:\Users\stale\_e\gdar\000\Dropbox\Deborah Murphy Lagos & Associates, LLC\Projects\Key West - NEM Update\maps\Figures\Figure G-4 2028 Future Condition NEM - 11x17 - 2000ft.mxd, Date Saved: 2/18/2023 9:11:21 PM



Sources:  
 RS&H, April 2022 (2028 Current Future Condition Noise Contour); Deborah Murphy Lagos & Associates, LLC, June 2021 (Land Use); Ricondo & Associates, Inc., June 2020 (Airfield);  
 Deborah Murphy Lagos & Associates, LLC, August 2021 (Community Facilities, Health Facilities, Places of Worship, Recreational Facilities, Schools & Day Cares);  
 Florida Department of Environmental Protection, March 2019 (Florida Keys Overseas Heritage Trail and Paddling Trail);  
 Martinez Geospatial, Basemap Planimetrics, November 2016 (Airport Property Line); Monroe County, August 2017 (City of Key West Boundary);  
 Monroe County, February 2020 (Monroe County Boundary); ESRI, November 2021 (World Imagery)

LEGEND		
<b>Noise Contours</b>		
	65 DNL	
	70 DNL	
	75 DNL	
<b>Non-Compatible Land Use</b>		
	Residential – Single Family	
	Residential – Multi-Family	
	Transient Lodging	
	Institutional	
<b>Compatible Land Use</b>		
	Agricultural	
	Industrial	
	Institutional	
	Mining, Petroleum, and Gas Land	
	Open Space	
	Public/Semi-Public	
	Recreational Areas	
	Residential – Single Family	
	Residential – Mobile Homes	
	Residential – Multi-Family	
	Transient Lodging	
	Unclassified	
	Vacant	
	Commercial/Office	
<b>Other Features</b>		
	Community Facility	
	Healthcare Facility	
	House of Worship	
	Recreational Facility	
	School/Day Care	
	Florida Keys Overseas Paddling Trail (FKOPT)	
	Florida Keys Overseas Heritage Trail (FKOHT)	
	Airport Boundary	
	City of Key West Boundary	
	Monroe County Boundary	





Gulf of Mexico

Atlantic Ocean



2028 Future Condition Noise Exposure Map

FIGURE G.4B



**LEGEND**

<b>Noise Contours</b>	Institutional	<b>Other Features</b>
65 DNL	Mining, Petroleum, and Gas Land	Community Facility
70 DNL	Open Space	Healthcare Facility
75 DNL	Public/Semi-Public	House of Worship
<b>Non-Compatible Land Use</b>	Recreational Areas	Recreational Facility
Residential – Single Family	Residential – Single Family	School/Day Care
Residential – Multi-Family	Residential – Mobile Homes	Florida Keys Overseas Paddling Trail (FKOPT)
Transient Lodging	Residential – Multi-Family	Florida Keys Overseas Heritage Trail (FKOHT)
Institutional	Transient Lodging	Airport Boundary
<b>Compatible Land Use</b>	Unclassified	City of Key West Boundary
Agricultural	Vacant	Monroe County Boundary
Industrial	Commercial/Office	

N  
W E S  
0 2,000 Feet

Sources: RISH, April 2022 (2025 Current Future Condition Noise Contour); Deborah Murphy Legos & Associates, LLC, June 2021 (Land Use); Ricordo & Associates, Inc., June 2020 (Airfield); Deborah Murphy Legos & Associates, LLC, August 2021 (Community Facilities, Health Facilities, Places of Worship, Recreational Facilities, Schools & Day Care); Florida Department of Environmental Protection, March 2015 (Florida Keys Overseas Heritage Trail and Paddling Trail); Metrick Geospatial, BaseMap Parameters, November 2016 (Aerial Photography Data); Monroe County August 2017 (City of Key West Boundary); Monroe County, February 2020 (Monroe County Boundary); ESRI, November 2021 (World Imagery)