

# KEY WEST INTERNATIONAL AIRPORT—EYW

## VOLUNTARY NOISE ABATEMENT PROCEDURES

### Curfew

- Please observe the voluntary curfew on aircraft activity between 11:00 pm and 7:00am local time.

### Ground Power Units (GPUs)

- When time and safety permit, please use available GPUs in place of on-board Auxiliary Power Units (APUs).

### Arrival and Departure Procedures

When weather, time, safety, and aircraft performance permit:

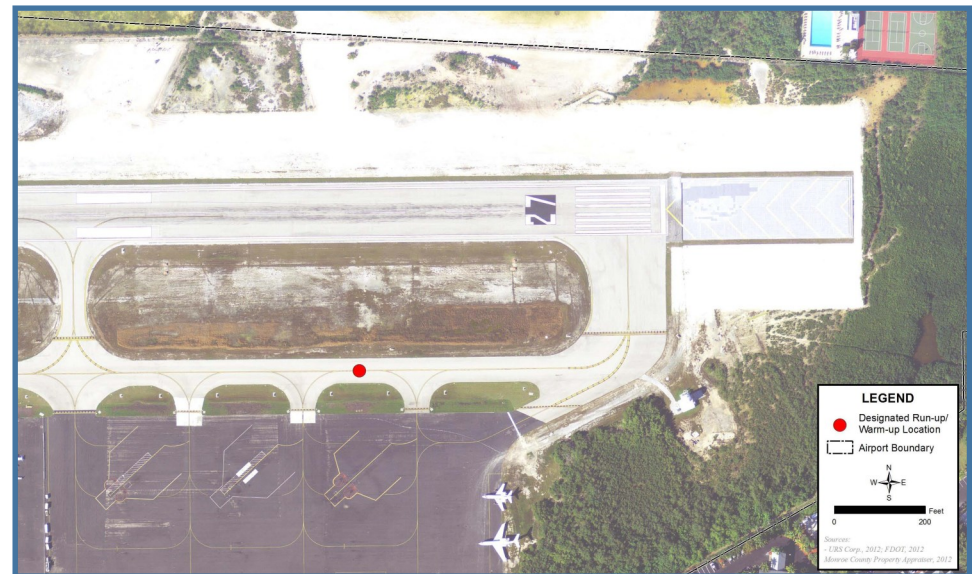
- Please avoid direct overflight of multi-family residential buildings that are in close proximity to the airport.
- Aircraft departing VFR on Runway 27, please maintain runway heading until reaching the airport boundary.
- Aircraft arriving VFR on Runway 09, please coordinate with ATC to use a variety of flight paths during daylight hours when on approach.
- Departing jet aircraft please use NBAA noise abatement departure procedure or airline-approved noise abatement departure procedure.
- Propeller aircraft please use propeller and power adjustments, as safety allows.

### Air Tour and Aerial Advertising Flights

- Please avoid direct overflight of Key West by the Sea and Las Brisas Condominiums and Riviera Shores Neighborhood.

### Aircraft Engine Run-ups

- Between the hours of 11:00 pm and 7:00 am local time, aircraft engine run-ups must be conducted at the designated location as shown below. Run-up is defined as “advancing the r.p.m. of a prop aircraft’s engine or engines to the appropriate medium setting for the aircraft type as a final engine and systems test before full power takeoff.”
- Between the hours of 7:00 am and 11:00 pm local time, aircraft engine run-ups shall be made only at the ends of the parallel taxiway or near the runway ends behind the holding line markings so long as the same shall not interfere with operation of other aircraft.



### Helicopters

- When time and safety allow, please depart to and arrive from the south (toward the ocean) to avoid low overflights of noise-sensitive residential areas (e.g, Riviera Shores) directly north of the airport.



# KEY WEST INTERNATIONAL AIRPORT—EYW

## VOLUNTARY NOISE ABATEMENT PROCEDURES

